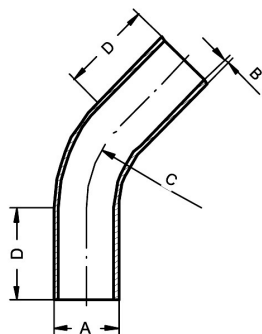
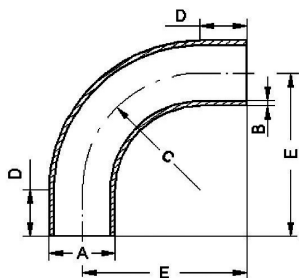


**Pipe components for Bulk material**
**Art.No**
**EUR**
**Art.No**
**EUR**
**Pipe bend 45°, large radius**


DN	A	B	C	D			AISI304	
76,1-R800	76,1	2	800	200			572723	165,10
76,1-R1000	76,1	2	1000	200			572744	158,30
80-R150	80	2	150	200			572724	108,10
80-R500	80	2	500	200			572725	115,20
80-R800	80	2	800	200			572726	172,50
80-R1000	80	2	1000	200			572727	186,80
84-R500	84	2	500	200			572728	126,30
84-R800	84	2	800	200			572729	172,40
88,9-R500	88,9	2	500	200			572730	129,60
88,9-R800	88,9	2	800	200			572731	172,40
101,6-R500	101,6	2	500	200			572745	147,40
101,6-R800	101,6	2	800	200			572746	170,10
101,6-R1000	101,6	2	1000	200			572732	195,70
104-R500	104	2	500	200			572747	180,60
104-R800	104	2	800	200			572748	175,70
104-R1000	104	2	1000	200			572733	206,90
114,3-R800	114,3	2	800	200			572749	204,50
114,3-R1000	114,3	2	1000	200			572750	204,50
129-R1000	129	2	1000	200			572734	425,30

**Pipe bend 90°, large radius**


DN	A	B	C	D	E			AISI304	
38-R70	38	1,5	70	100	175			572801	44,20
38-R250	38	1,5	250	100	350			572802	47,10
38-R500	38	1,5	500	100	600			572803	50,20
40-R75	40	1,5	75	100	175			572804	44,30
40-R250	40	1,5	250	100	350			572805	52,50
40-R500	40	1,5	500	200	700			572806	53,10
45-R75	45	1,5	75	100	175			572836	41,20
45-R300	45	1,5	300	200	500			572807	50,20
45-R500	45	1,5	500	200	700			572837	55,60
50-R75	50	1,5	75	100	175			572808	44,20
50-R250	50	1,5	250	100	350			572809	44,20
50-R500	50	1,5	500	200	700			572810	56,20
50-R800	50	1,5	800	200	1000			572811	135,80
50-R1000	50	1,5	1000	200	1200			572838	135,80
54-R150	54	2	150	100	250			572839	90,70
54-R250	54	2	250	100	350			572840	74,30
54-R500	54	2	500	200	700			572812	82,60
60,3-R115	60,3	2	115	150	265			572813	76,60
60,3-R250	60,3	2	250	200	450			572814	88,50
60,3-R500	60,3	2	500	200	700			572815	88,50
60,3-R800	60,3	2	800	200	1000			572816	132,80
60,3-R1000	60,3	2	1000	200	1200			572841	159,60
65-R115	65	2	115	150	265			572817	82,60

## Pipe components for Bulk material

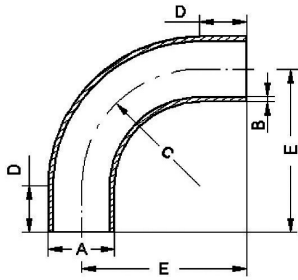
Art.No

EUR

Art.No

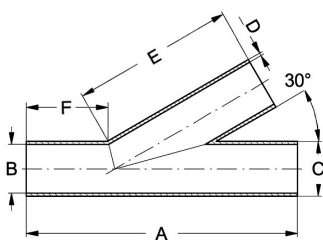
EUR

### Pipe bend 90°, large radius



DN	A	B	C	D	E			AISI304	
65-R250	65	2	250	200	450			572818	99,30
65-R500	65	2	500	200	700			572819	112,10
65-R800	65	2	800	200	1000			572820	164,60
70-R500	70	2	500	200	700			572821	123,90
70-R800	70	2	800	200	1000			572822	174,10
70-R1000	70	2	1000	200	1200			572842	174,10
76,1-R500	76,1	2	500	200	700			572843	138,10
76,1-R800	76,1	2	800	200	1000			572823	194,50
76,1-R1000	76,1	2	1000	200	1200			572844	206,90
80-R150	80	2	150	200	350			572824	120,80
80-R500	80	2	500	200	700			572825	143,80
80-R800	80	2	800	200	1000			572826	201,30
80-R1000	80	2	1000	200	1200			572827	199,90
84-R500	84	2	500	200	700			572828	143,80
84-R800	84	2	800	200	1000			572829	201,30
88,9-R500	88,9	2	500	200	700			572830	143,80
88,9-R800	88,9	2	800	200	1000			572831	212,70
101,6-R500	101,6	2	500	200	700			572845	210,80
101,6-R800	101,6	2	800	200	1000			572846	244,40
101,6-R1000	101,6	2	1000	200	1200			572832	241,50
104-R500	104	2	500	200	700			572847	217,20
104-R800	104	2	800	200	1000			572848	247,80
104-R1000	104	2	1000	200	1200			572833	252,90
114,3-R800	114,3	2	800	200	1000			572849	292,90
114,3-R1000	114,3	2	1000	200	1200			572850	292,90
129-R1000	129	2	1000	200	1200			572834	539,80
154-R1000	154	2	1000	200	1150			572851	784,80

### Branch piece 30°



DN	A	B	C	D	E / F			AISI304	
38x1,5	300	35	38	1,5	210 / 106			573302	53,10
40x1,5	300	37	40	1,5	210 / 110			573304	53,10
45x1,5	300	42	45	1,5	210 / 104			573307	53,80
50x1,5	300	47	50	1,5	210 / 100			573309	54,90
54x2	300	50	54	2	208 / 100			573311	65,50
60,3x2	350	56,3	60,3	2	210 / 106			573315	76,60
65x2	400	61	65	2	260 / 145			573317	97,90
70x2	450	66	70	2	280 / 140			573320	102,90
76,1x2	410	72,1	76,1	2	260 / 140			573324	108,80
80x2	500	76	80	2	348 / 145			573325	128,50
84x2	420	80	84	2	300 / 120			573327	123,40
88,9x2	480	84,9	88,9	2	338 / 130			573330	134,90
101,6x2	550	97,6	101,6	2	350 / 185			573334	168,90
104x2	550	100	104	2	366 / 200			573335	190,70
129x2	700	125	129	2	450 / 223			573345	207,20

**LINNE MANN**

Rohrverbindungen • Edelstahlarmaturen  
Pipe connections • Stainless steel fittings

LINNE MANN GmbH • Heerweg 14-16  
72070 Tübingen / Germany

Fon: +49 (0) 7071 97555-0  
Fax: +49 (0) 7071 97555-10

E-Mail: info@linne mann-online.com  
Internet: www.linne mann-online.com